

SHAW'S.  
PART OF THE ERS GROUP

# ELECTION EQUIPMENT CATALOGUE.



[electionsupplies.co.uk](http://electionsupplies.co.uk)

# Welcome to SHAW'S ELECTION EQUIPMENT CATALOGUE.

In the following pages, you will find numerous products, large and small, that have been designed to make the administration of elections and referendums as trouble-free as possible.

The range of items has been developed over many years and Shaw's work closely with the Association of Electoral Administrators, the Electoral Commission and the Cabinet Office to ensure that our equipment is practical, useful and conforms with all relevant legislation and guidance.

Shaw's welcome suggestions from electoral administrators for possible additions and enhancements to our product range.

## Contents

Shaw's Presiding Officer's Sundries Pack 4-5

Voting Screens 6-7

Ballot Boxes 8

Ballot Box Accessories 9

Other Polling Station Equipment 10-11

Wallets and Sacks 12

Signage 13

Equipment for the Count 14-15

Equipment for the Canvass 16

Special Order and Bespoke Items 17

# SHAW'S PRESIDING OFFICER'S SUNDRIES PACK



The comprehensive Sundries Pack comprises all five of the packs shown on these two pages and is supplied in an environmentally-friendly, re-usable wallet (although a traditional cardboard box is available on request). The wallet comes with a matching pencil case and both these items can be returned to Shaw's for credit and re-use. Alternatively, the five individual packs can be purchased separately to refill existing wallets. The Sundries Pack contents are reviewed annually in the light of feedback from users and therefore may vary slightly from those shown here.

Shaw's are now able to supply bespoke enhanced contents to their sundries packs. Please enquire for details.

Note that for Welsh elections, bilingual versions of the notices, forms and packets are supplied.

*All packs improved for 2017!*

Illustrations show contents for English local government elections.



## Pack 1 – Stationery

Ref: SSP1

- 2 x HB pencils, with eraser (HBP1)
- 6 x ballot pencils (BAP100)
- Double barrel pencil sharpener with shavings collector (EPS1)
- Pair of scissors (ESS1)
- String (EBS1)
- Box of 50 drawing pins (DRP151)
- Roll of adhesive tape (EAT1)
- Pack of Shaw's White Tack (EWT1)
- 2 x ballpens (BAP201)



## Pack 2 – Other Stationery

Ref: SSP2

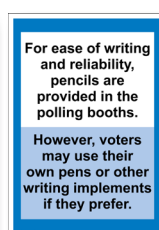
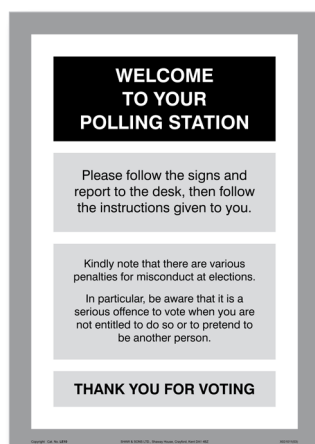
- 12" ruler (ERUL)
- 3 x plain adhesive labels (SAL1)
- Clear plastic sack (CPS100)
- Black plastic sack (OPS100)
- Green plastic sack (GPS100)
- 3 x cable ties (KPL01)
- Ballot paper magnifier (MAG1)



## Pack 3 – Notices

Ref: SSP3

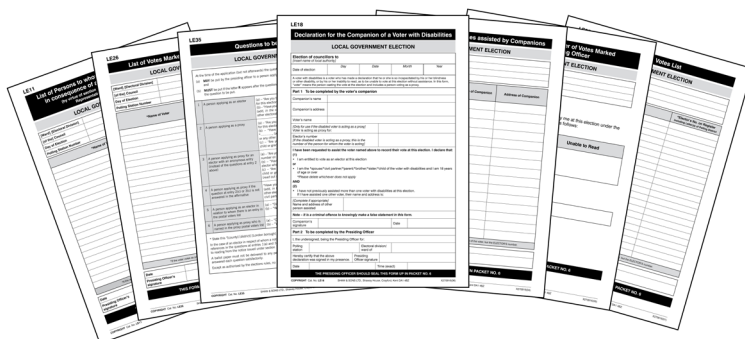
- 3 x large POLLING STATION signs (paper) (LE104)
- 3 x small POLLING STATION signs (paper) (LE102)
- OPENING TIMES sign (paper) (LE109)
- 3 x WAY IN signs (paper) (LE100)
- 2 x WAY OUT signs (paper) (LE101)
- 2 x strips of five direction arrows (paper) (LE100X)
- 2 x DISABLED ACCESS signs (paper) (LE105)
- WELCOME TO YOUR POLLING STATION sign (paper) (LE10)
- NO SMOKING sign (paper) (LE106)
- PLEASE SWITCH OFF MOBILE PHONES sign (paper) (LE107)
- 2 x COLLECT BALLOT PAPERS HERE signs (paper) (LE103)
- YOU MAY USE YOUR OWN PEN sign (paper) (LE99)



## Pack 4 – Forms

Ref: LESDF

- Questions to be put to voters (LE35)
- Tendered votes list (LE25)
- 10 x declaration by companion of voter with disabilities (LE18)
- List of voters with disabilities assisted by companions (LE17)
- List of votes marked by Presiding Officer (LE26)
- Statement of number of votes marked by Presiding Officer (LE26A)
- List of persons to whom ballot papers are delivered in consequence of an alteration to the register (LE11)



## Pack 5 – Packets

Ref: LESDP

- No. 2 – The unused and spoilt ballot papers (paper sack with adhesive label included) (LEPKT2)
- No. 3 – The tendered ballot papers which have been marked by voters (LEPKT3)
- No. 4 – The marked copy of the register, list of postal voters and list of proxies (LEPKT4)
- No. 5 – Certificates of employment on the day of the poll (LEPKT5)
- No. 6 – The tendered votes list, list of votes marked by PO, statement of number of votes marked by PO, list of voters with disabilities assisted by companions, declarations made by companions of voters with disabilities, and list of persons to whom ballot papers are delivered in consequence of an alteration to the register (LEPKT6)
- No. 7 – Ballot paper account (LEPKT7)
- No. 8 – Appointments of PO and poll clerks (LEPKT8)
- No. 9 – Corresponding number lists (LEPKT9)

# VOTING SCREENS

## Modular Voting Screens

Although the traditional wooden voting screen has served well for decades (and is, indeed, still available – see opposite page), Shaw’s felt that the 21st century deserved something more modern and practical. Accordingly, we set out to produce the ‘Holy Grail’ of voting screens – robust, portable, adaptable, attractive and, above all, low cost. We commissioned expert British designers with this brief and the result is the ingenious modular system shown here.

The basic unit can be extended indefinitely with the addition of extension units and a unique 4-way connection piece enables numerous configurations. The hook-on shelf provides a stable and solid writing surface for voters.

Separate disabled screens are no longer required as the standard unit can be used for disabled voters with the connection of two metal shelf supports that allow the sides to be splayed out. The height is lowered by a simple adjustment of the legs. (Note that in disabled mode, the screens are not modular in that, although they may be joined together, an extension unit cannot be used.)

Construction is of durable plastic with steel legs which retract to allow the units to be easily transported and stored.

Shaw’s modular voting screen is made in the UK and is available from stock.

*UK and international patents pending*

### Modular voting screen

Ref: VS01

H1854mm x W663mm x D633mm

Three panels with legs, shelf and four connectors



### Modular voting screen extension unit

Ref: VS02

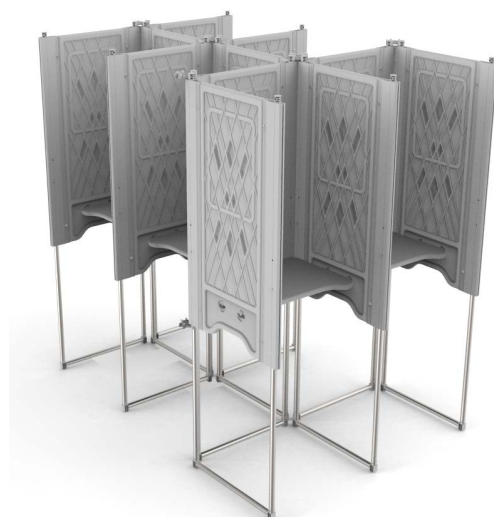
Two panels with legs, shelf and two connectors



### Shelf bearers (pair)

Ref: VS03

To enable use of modular voting screen (VS01) for disabled voters



Shelf height settings: 910mm or 790mm

## Traditional Wooden Voting Screens

Shaw's wooden voting screens are craftsmen-made in the UK to order. They are robust and fold flat for easy storage.

### Single voting screen

Ref: VSS

H1870mm x W670mm x D635mm

### Double voting screen

Ref: VSD

H1870mm x W1310mm x D635mm

### Single voting screen for disabled voters

Ref: VSSD

Wider and with lower shelf for easy access

H1870mm x W860mm x D635mm

### Combined single/disabled voting screen

Ref: VSC

H1870mm x W1500mm x D635mm

### Budget single voting screen

Ref: VSSB

Lighter construction and lighter weight, this wooden voting screen features a triangular shelf

H1870mm x W820mm x D600mm



VSS



VSD



VSSD



VSC



VSSB

Shelf height is 910mm in all standard voting compartments and 790mm in disabled compartments

## Cardboard Table-top Voting Screen

### Cardboard table-top voting screen

Ref: VSTT1

Easy assembly – from flat-packed sheet to voting screen in seconds. Designed for single use and ideal for very small polling stations.

Heavy grade 4.5mm thick shiny white cardboard, complete with plastic loop for attaching ballot pencil.

Safety edges to avoid paper cuts.

H800mm x W590mm x D490mm

Supplied in 5s



# BALLOT BOXES

## Plastic Ballot Boxes

### 50 litre plastic ballot box

Ref: SBBP

470mm (h) x 450mm x 350mm

### 90 litre plastic ballot box

Ref: SBBPL

570mm (h) x 570mm x 450mm

Available in 'standard' 50 litre and high-capacity 90 litre sizes, these well-designed and practical ballot boxes are specially made for Shaw's.

In specifying these boxes, our requirements were: compact stacking of boxes and lids for easy storage; robust, long-lasting construction; ability to replace unsightly cable tie seals with neat, easy-to-use, cheaper seals (SBBP only); and, most important of all, a very low price.

The 50 litre boxes use up to four Shaw's arrow-lock seals with easy release tabs (BBS3) for the lid, while the 90 litre box uses four traditional pull-secure seals (BBSS); both boxes use a plastic 'padlock' seal (BBS4) for the flap that covers the slot (although a conventional tie seal may also be used for this). Ten seals (8 x BBS3 or BBSS and 2 x BBS4) are included with each box.

Colour: all black

- Robust, durable plastic construction
- Boxes nest inside each other for compact storage
- Lids store within boxes and can also stack on one another
- Lids are recessed to allow boxes to stack on top of one another
- Hinged flap to seal slot
- SBBP lids use four Shaw's arrow-lock seals with easy release tabs. These are low cost and are much neater than cable-tie type seals
- Slot uses one plastic 'padlock' seal
- 10 seals included with each box
- Self-adhesive clear plastic wallet can be supplied for labelling purposes –CPW1/CPW3, see page 10
- Generous bulk discounts available



## Cardboard Ballot Box

### Corrugated board ballot box

Ref: SBBC

Shaw's own registered design board ballot box is supplied flat for easy assembly from the included instructions.

Its clever construction makes it completely secure when using Shaw's seals (items BBSS and BBSM).

Black, lightweight and robust, it is ideal as an additional box for combined elections and also for returned postal vote envelopes.

500mm (h) x 340mm x 340mm. Recyclable



### IMPORTANT NOTE

Please note that the long-life folding ballot box (SBBF) is no longer available due to its increased cost of production. However, the Envo ballot tags necessary for sealing it can still be purchased from Shaw's. See opposite page, product code BBT.

# BALLOT BOX ACCESSORIES

## Ballot box trolleys

**Ref: SBBT4**

Shaw's premium ballot box trolley has an easy-fold action with telescopic handle. It is fitted with two rubber bungee cords to secure the ballot box.

Size open 90cm high x 25cm wide x 23.5cm deep; folded 44cm high x 25cm wide x 7.8cm deep.

Weight 1.54kg.

Carries up to 35kg.

**Ref: SBBT6**

This folding hand truck has a lightweight aluminium frame,

with a rubber grip handle. Toe plate and wheels open simultaneously. Complete with elasticated strap.

Size open 100cm high x 39cm wide x 40cm deep; folded 63cm high x 40cm wide x 5.5cm deep.

Carries up to 70kg.



## Bungee cord

**Ref: EBC1200**

Strong elastic flat bungee with plastic hooks at each end. Ideal for securing ballot boxes on to trolleys/hand trucks, etc.

1200mm long x 20mm x 5mm

## Slot highlighters

**Ref: SLH2**

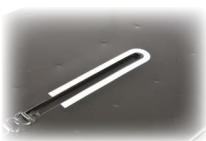
White self-adhesive strips to highlight the slot on Shaw's plastic ballot boxes (SBBP and SBBPL) for voters with poor vision

Supplied in 100s

**Ref: SLH1**

White self-adhesive strip to highlight the slot on traditional metal ballot boxes for voters with poor vision

Supplied in 10s



## Ballot paper compactor

**Ref: LE120**

Strong plastic. Compacts ballot papers within ballot box to create extra space

Length 52cm



## Ballot box seal

**Ref: BBS3**

Grey arrow-lock seals with easy release tabs, for use with Shaw's plastic ballot box (SBBP/SBBPL)

Serially numbered, supplied in 500s



## Plastic 'padlock' ballot box seal

**Ref: BBS4**

White padlock-style seal, ideal for sealing the flap over the slot of Shaw's plastic ballot box (SBBP/SBBPL)

Serially numbered, supplied in 100s

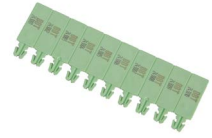


## Envo ballot tags

**Ref: BBT**

For sealing Shaw's long-life folding ballot box (SBBF, now discontinued). Light green

Serially numbered, supplied in 100s



## Tamper evident self-adhesive ballot box seals

**Ref: BBSV3**

Black seals featuring a tamper-evident surface that leaves a "VOID" pattern on the label when the label is lifted.

Tear-off tab with copy of serial number for recording purposes. This security seal is ideal for preventing undetected access to any type of ballot box. Cannot be removed or switched to another piece of equipment without detection.

45mm x 175mm + tab  
Serially numbered, supplied in 100s



## Traditional ballot box seal

Traditional plastic pull-secure seals

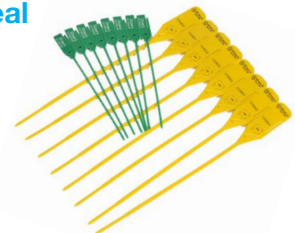
Serially numbered, supplied in 100s

**Ref: BBSS**

150mm tail length, green

**Ref: BBSM**

260mm tail length, yellow



## Arrow-lock ballot box seal "Linpac"

**Ref: BBS2**

White. Serially numbered, supplied in 500s



## Metal padlock

**Ref: MPL10**

With three keys, for ballot box  
Supplied in 10s



## Keyless padlock

**Ref: KPL11**

Traditionally used with metal ballot boxes  
Supplied in 10s



## Plastic seals for keyless padlock

**Ref: KPL21**

Serially numbered, supplied in 100s





# OTHER POLLING STATION EQUIPMENT

## High-visibility vest for polling station staff

Printed with **POLLING STATION STAFF** on the back.  
 Note that larger sizes should be ordered if vests are to be worn over a coat, etc.



- EVPS** Small (36" to 38" chest)
- EVPM** Medium (39" to 41" chest)
- EVPL** Large (42" to 44" chest)
- EVPXL** X Large (45" to 48" chest)
- EVPXXL** XX Large (49" to 52" chest)
- EVPXXXL** XXX Large (53" to 57" chest)

These vests can be customised with an authority name on the back and/or logo on the front (min. order 10 vests). Any other wording is also available to special order, e.g.:

**ELECTION STAFF**  
**DEMOCRATIC SERVICES TEAM**  
**ELECTORAL REGISTRATION**  
**VOTER REGISTRATION**



## Floor sign

**Ref: LE118**

Lightweight adjustable multi-purpose floor standing sign holder for internal use. Chrome-plated metal telescopic pole, plastic lever lock and black plastic T-piece. 240mm diameter steel base. Extends from 800mm–1550mm high. With black plastic frame with card insert to take an A3 printed paper sheet each side. Frame can be used landscape or portrait.



## Wheeled and lidded storage container

**Ref: SBBT5**

Large wheeled and lidded storage container/cart. Rigid clip-on lid. Two large rubber-coated wheels allow the box to be pulled along easily by lifting the other end. Nests when empty and stacks when full. Can be sealed with two standard ballot box seals (BBSS/BBSM). Black with grey lid. Size 80cm long x 39cm wide x 40cm high (66/29/34cm internal). 90 litres capacity



## Free-standing notice board

**Ref: LE119**

Ideal for use in polling stations without available notice boards or wall space. Aluminium-framed grey felt notice board 1200 x 900mm. Takes pins and velcro dots. Supplied with folding tripod easel in compact carry bag.



## Collapsible "boot cart" trolley

**Ref: SBBT2**

A multi-purpose trolley ideal for carrying election supplies. This lightweight and durable plastic trolley folds into an easy-to-carry compact case. Unfolds in seconds. Reinforced base, clip-on side supports for extra strength, telescopic aluminium handle with contoured grip and rubber tyres.

Size open 83.3cm high x 39.2cm wide x 33.5cm deep; folded 41.2cm x 40.1cm x 8.5cm. Weight 2.2kg.

Carries up to 25kg  
 Black and yellow



## Other Polling Station Equipment continued

### Polling station First Aid kit

Ref: EFAK

A compact kit containing useful items for minor injuries, including paper cuts. This low-cost kit is ideal for polling stations and counts.

Contents\*:

- 8 plasters
- 4 alcohol pads
- 2 antiseptic wipes
- 1 non-adherent pad
- 1 bandage
- 1 triangle bandage
- 1 roll of gauze
- 1 roll of tape
- 1 pair of scissors
- all in a nylon pouch



\* Note that appearance and contents may vary slightly from those shown

### Ballot pencils

Ref: BAP100

With holed rubber cap for attachment to voting screen  
Supplied in 100s



### Ballot paper magnifier

Ref: MAG1

Credit card sized magnifier to assist persons with impaired vision



### Identity badge holder

Ref: ID50

Plastic holder with metal clip. Supplied in 10s

### Lanyard

Ref: IDLAN1

Black lanyard with crocodile clip and safety release, suitable for use with ID50 badge holder  
Supplied in 10s



### Card inserts

Ref: ID51 (Supplied free with ID50)

POLL CLERK (ID51C); PRESIDING OFFICER (ID51P); SENIOR PRESIDING OFFICER (ID51S); RETURNING OFFICER (ID51R); ACTING RETURNING OFFICER (ID51AR); DEPUTY RETURNING OFFICER (ID51DR)

Other wording available on request

# WALLETS AND SACKS

## Secure wallet

Ref: SECWT

'QUIKPAK' black PVC tamper-evident wallet for postal ballot papers handed in at the polling station  
355mm x 470mm



## Arrow-lock wallet seals

Ref: SECSL

Plastic seals for secure wallet (SECWT). Orange  
Serially numbered, supplied in 100s



## Button wallet seals

Ref: SECSL3W

Seals for old-style secure wallets. White  
Serially numbered, supplied in 500s



## Insert cards

Ref: SECWTLAB

Insert cards for secure wallets.  
58mm x 112mm  
Supplied in 100s



## Clear plastic wallet

With adhesive back, for displaying notices  
Ideal for labelling Shaw's plastic ballot boxes  
A4 – Ref: CPW1  
A3 – Ref: CPW2  
A5 – Ref: CPW3



## Clear plastic sack

Supplied in 100s

Ref: CPS100

860mm x 736mm with 457mm gusset (40 micron)

Ref: CPS250

1143mm x 914mm with 508mm gusset (55 micron)

## Black plastic sack

Ref: OPS100

860mm x 736mm with 457mm gusset (40 micron)

Supplied in 100s

## Green plastic sack

Ref: GPS100

860mm x 736mm with 457mm gusset (40 micron)

Supplied in 100s

## Polythene bag

Ref: PB100

Small, self-seal polythene bag

230mm x 305mm

Supplied in 100s



CPS100, CPS250, OPS100, GPS100, PB100

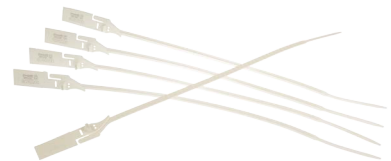
## Bag seal

Ref: BBSL

Traditional plastic pull-secure seal

400mm tail length, white

Serially numbered, supplied in 100s



## Paper sacks

Ref: PS200

For storage/transmission of documents. Strong brown paper sacks with reinforced sewn bottom

960mm x 580mm x 140mm

Supplied in 100s

## Sack labels

Ref: PS201

Tie-on labels for above paper sacks

Supplied in 100s

## Sack seals

Ref: PS202

Metal seals for above sacks

Supplied in 100s



PS200, PS201, PS202

# SIGNAGE

## Pavement sign

Ref: LE108

'Ecoflex' polling station pavement sign. This portable, long-life sign comprises an aluminium panel with a sturdy recycled PVC base. The panel's flexibility allows the sign to withstand winds of over 70mph. Assembles in seconds, yet stores in a compact space. Two-sided with arrows.

Panel size 685mm x 460mm



These signs are available with bespoke wording, e.g. "Polling Place", or with a local authority's name and logo.



## Rigid Correx (lightweight plastic) signs

- LE104B POLLING STATION, 508mm x 680mm
- LE105B DISABLED ACCESS, reversible, 156mm x 720mm
- LE117B DISABLED PARKING ONLY, A3



## Rigid Correx reflective sign

Ref: LE104D

As above but with reflective coating that radiates a glow in the dark

POLLING STATION,  
400mm x 600mm



## Banners

PVC banners with brass eyelets:

- LE104A POLLING STATION, 625mm x 915mm
- LE102A POLLING STATION, 127mm x 720mm
- LE100A WAY IN, reversible,\* 127mm x 570mm
- LE101A WAY OUT, reversible,\* 127mm x 570mm

\*One side of the banner has the arrow pointing to the left and the other side has the arrow pointing to the right.



## Cable ties

Ref: KPL01

Ideal for attaching signs to fences, posts, etc.

Nylon, 295mm long

Supplied in 100s



## Paper signs (see page 3 for illustrations)

- LE104 POLLING STATION, 450mm x 640mm
- LE102 POLLING STATION, 125mm x 640mm
- LE109 OPENING TIMES, A3
- LE100 WAY IN, 125mm x 640mm
- LE101 WAY OUT, 125mm x 640mm
- LE105 DISABLED ACCESS, 180mm x 640mm
- LE100X Arrowheads, in strips of five
- LE100Y Arrowheads, in strips of five on adhesive backing
- LE10 WELCOME TO YOUR POLLING STATION, A2
- LE106 NO SMOKING, A4, red and black
- LE107 PLEASE SWITCH OFF MOBILE PHONES, A4, red and black
- LE103 COLLECT BALLOT PAPERS HERE, A4
- LE99 YOU MAY USE YOUR OWN PEN, A4, blue and black

## Paper signs (not included in sundries packs)

- LE116 NO PHOTOGRAPHY, A3, red and black
- LE106V NO SMOKING OR VAPING, A4, red and black
- LE98 NO DOGS ALLOWED, A4, red and black

(Except for the largest ones, paper signs are supplied in 10s)



## Bilingual Welsh/English Signs

All the above signs, except LE100A, LE101A, LE104D and LE105B, are available bilingual Welsh/English. The product references are the same but suffixed "BL".

## EQUIPMENT FOR THE COUNT

**Counting station sundries pack****Ref: SSPSP01**

A pack that contains all the stationery equipment required at the count. Packs can be tailor-made to individual requirements on request.

- 50 x 50mm foldback clips
- 200 x 19mm foldback clips
- 1 x pocket calculator
- 2 x 12" rulers
- 2 x pairs of scissors
- 8 x HB pencils
- 2 x pencil sharpeners
- 2 x erasers
- 1lb (450g) assorted elastic bands
- 12 x rubber thimblettes (6 small, 6 medium)
- 2 x rolls of clear adhesive tape 33m x 19mm

**Counting tray (large)****Ref: CTR2**

Grey plastic stacking tray  
600mm x 400mm x 110mm

**Counting tray (small)****Ref: CTR1**

Grey-blue plastic stacking and nesting tray  
427mm x 312mm x 75mm



*Note that other sizes of counting tray are available to special order.*

**Counting table divider set****Ref: EDEV1**

Set of five counting table dividers, comprising five white plastic 'Foamex' boards 600 x 150 x 3mm, plus ten clear acrylic feet and a packet of Shaw's White Tack.

**Joint piece****Ref: EDEV2**

Clear acrylic joint piece for joining counting table dividers end to end. 76mm

Supplied in 5s

**Count table sign****Ref: LE118**

Lightweight sign holder for indicating ward, etc. Can be floor standing or placed on table. Chrome-plated metal telescopic pole, plastic lever lock and black plastic T-piece. 240mm diameter steel base. Extends from 800mm–1550mm high. With black plastic frame with card insert to take an A3 printed paper sheet each side. Frame can be used landscape or portrait.

**Counting sheets**

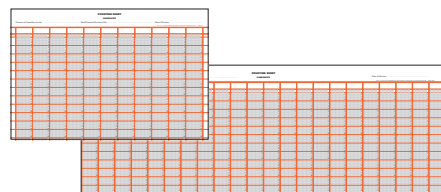
Tally style counting sheets. Supplied in 10s

**Ref: LE19**

Max. 11 names, 524mm x 350mm

**Ref: LE19X**

Max. 22 names, 965mm x 350mm

**Security seal cutters****Ref: BBSC**

6" (150mm) cutters for safely removing ballot box seals, etc.

**Envelope slitter****Ref: SLI1**

Ideal for opening postal votes



## Equipment for the Count continued

**Thimblettes**

'Thimblette' rubber finger cones.  
All sizes supplied in 10s

- ETHXS** Extra small, size 00, red  
**ETHX** Small, size 0, green  
**ETHM** Medium, size 1, blue  
**ETHL** Large, size 2, yellow  
**ETHXL** Extra large, size 3, orange

**Foldback clips**

Ref: EBDC19

19mm foldback clip  
Supplied in 10s

Ref: EBDC50

50mm foldback clip  
Supplied in 10s

**Elastic bands**

Ref: ELAS19

Pack of No. 19 (89 x 1.5mm)  
elastic bands in resealable  
bag

Approx. 1,335 bands

Ref: ELAS36

Pack of No. 36 (127 x 3mm)  
elastic bands in resealable bag  
Approx. 460 bands

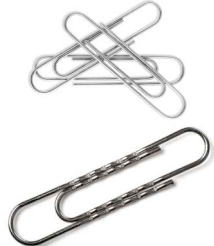
**Paper clips**

Ref: EF1

Box of 100 large plain paper clips,  
length 51mm

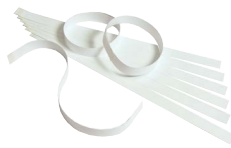
Ref: EF2

Box of 100 giant wavy paper clips,  
length 76mm

**Paper bands**

Ref: LE111

Self-adhesive paper bands for  
holding counted ballot papers  
Supplied in 100s

**Sticky Notes**

Ref: ES1

Repositionable sticky notes, yellow,  
size 75 x 75mm

100 sheets per pad

Pack of 12 pads

**Card inserts for identity badge holder**

Ref: ID52 (Supplied free with ID50 – see page 9)  
COUNT SUPERVISOR (ID52S); COUNTING  
ASSISTANT (ID52A); CANDIDATE (ID52C); ELECTION  
AGENT (ID52EA); COUNTING AGENT (ID52CA);  
GUEST (ID52G); OBSERVER (ID52OB)

Other wording available on request

**Notices**

A3 card signs

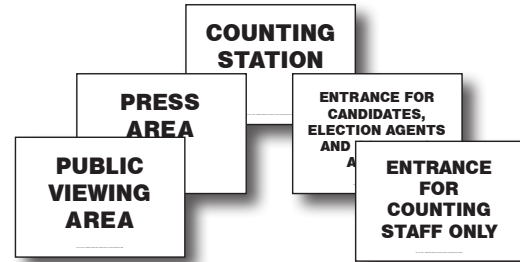
COUNTING STATION – Ref: CV1

ENTRANCE FOR CANDIDATES, ELECTION AGENTS AND  
COUNTING AGENTS – Ref: CV2

ENTRANCE FOR COUNT STAFF ONLY – Ref: CV3

PRESS AREA – Ref: CV4

PUBLIC VIEWING AREA – Ref: CV5

**Stamps**

The rubber stamps listed below are stock items. All are  
available as traditional stamps requiring an ink pad or as  
self-inking stamps. Other stamps with alternative wording  
are available to order – see page 15.

**REJECTED**

Impression size 25mm x 4mm

Traditional rubber stamp – Ref: RSR

Self-inking rubber stamp with red ink – Ref: RSRM

**REJECTED**, with tick boxes for reasons (voter identified,  
multiple vote, unmarked or uncertain)

Impression size 57mm x 37mm

Traditional rubber stamp – Ref: RSRR

Self-inking rubber stamp with red ink – Ref: RSRRM

**REJECTED IN PART: NAMES OF CANDIDATES THE  
VOTES FOR WHOM HAVE BEEN COUNTED**

Impression size 70mm x 16mm

Traditional rubber stamp – Ref: RSRP

Self-inking rubber stamp with red ink – Ref: RSRPM

**REJECTION OBJECTED TO**

Impression size 48mm x 4mm

Traditional rubber stamp – Ref: RSRO

Self-inking rubber stamp with red ink – Ref: RSROM

**PROVISIONALLY REJECTED**

Impression size 44mm x 4mm

Traditional rubber stamp – Ref: RSPR

Self-inking rubber stamp with red ink – Ref: RSPRM

**ALLOWED**

Impression size 25mm x 4mm

Traditional rubber stamp – Ref: RSA

Self-inking rubber stamp with red ink – Ref: RSAM

## EQUIPMENT FOR THE CANVASS

**Canvasser's/Presiding Officer's carry case****Ref: EB2**

This useful bag features an adjustable shoulder strap, pen and business card holders and a zipped front pocket.

42cm x 34cm x 8cm

Bags can be screen printed on the front flap with customer's own wording and logos, subject to a minimum order of 50.

**Canvasser's high-visibility vest**

Printed with **LOCAL AUTHORITY ELECTORAL REGISTRATION** on the back.

Note that larger sizes should be ordered if vests are to be worn over a coat, etc.



<b>EVS</b>	Small (36" to 38" chest)
<b>EVM</b>	Medium (39" to 41" chest)
<b>EVL</b>	Large (42" to 44" chest)
<b>EVXL</b>	X Large (45" to 48" chest)
<b>EVXXL</b>	XX Large (49" to 52" chest)
<b>EVXXXL</b>	XXX Large (53" to 57" chest)

These vests can be customised with an individual authority name on the back and/or logo on the front. Alternative wording is also available on request. (Minimum order 10 vests.)

**Canvasser's personal alarms**

Very loud alarms with pull pin activation. Police approved. Batteries included

**Metallic mini key ring torch alarm – Ref: EA1**

Key ring style with bright torch  
40mm x 60mm x 12mm

**Minder personal attack alarm – Ref: EA2**

Separate panic button. Belt clip  
60mm x 70mm x 20mm

**28 LED aluminium torch****Ref: EL5**

A strong black aluminium torch that gives out a very bright light, thanks to its 28 LED bulbs. Wrist strap. Supplied with 3 'AAA' batteries

Length 130mm, reflector diameter 25mm

**Compact aluminium torch****Ref: EL4**

Attractive, bright and lightweight hand torch. Supplied with 3 'AAA' batteries

Length 90mm, reflector diameter 24mm



## SPECIAL ORDER AND BESPOKE ITEMS

Shaw's product offering is not limited to the stock items described in this catalogue. We can supply and customise many additional items to special order. Below are some examples but we are always happy to source other equipment according to specific requirements. Please contact us with details for a quote.

### Notices, signs and posters

#### 'Ecoflex' pavement signs

Our pavement sign (see page 11) may be adapted to suit individual requirements and/or customised with an authority's name and logo.

#### Laminated signs and posters

We can produce laminated versions of any of our stock paper signs (detailed on page 11) on any standard paper size (A4, A3, A2, etc.).

We can also customise signs and posters with your choice of wording, e.g. PARKING FOR VOTERS; POLLING STATION OPEN.

#### Foamex rigid plastic signs

We can produce any of our stock paper signs on a rigid plastic material, 'Foamex', for increased durability.



### Rubber stamps

Further to our range of stock stamps detailed on page 13, we can also make to order stamps with your own choice of wording. Examples of stamps we have produced for some local authorities are:

I AM IN THE QUEUE

VOTING FOR MORE ANSWERS THAN THE VOTER WAS ENTITLED TO

REJECTED: DATE OF BIRTH MISMATCH

Made to order stamps are available in traditional rubber stamp style or self-inking.

### Counting trays

In addition to our two stock sizes of counting tray detailed on page 12, we can also source other sizes to order.

### High-visibility vests

High-visibility vests can be printed with any wording and logos. Examples of bespoke worded high-visibility vests we have produced for local authorities are:

**DEMOCRATIC SERVICES TEAM**

**ELECTION STAFF**

**TABLE SUPERVISOR**

**ELECTORAL REGISTRATION**

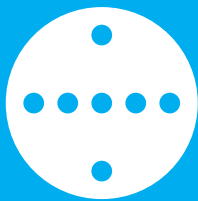
**VOTER REGISTRATION**

**COUNT STAFF**

**ELECTORAL SERVICES TEAM**

**REMEMBER – JUST BECAUSE IT'S NOT IN THE CATALOGUE  
DOESN'T MEAN WE CAN'T SUPPLY IT!**





**SHAW'S.**  
PART OF THE ERS GROUP

**Shaw & Sons Limited**

Shaway House, 21 Bourne Park, Bourne Road,  
Crayford, Kent DA1 4BZ

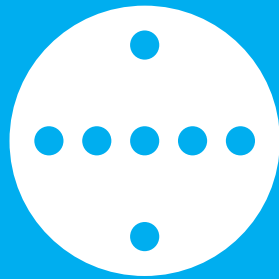
DX 400700 Crayford

Tel: 01322 621100

Fax: 01322 550553

E-mail: [elections@shaws.co.uk](mailto:elections@shaws.co.uk)

[www.electionsupplies.co.uk](http://www.electionsupplies.co.uk)



SHAW'S.

PART OF THE ERS GROUP